

NORMAN® EndpointProtection



User's Guide Version 7.20



SAFETY FIRST



- ✓ Endpoint Protection for Linux
- ✓ Antivirus & Antispyware
- ✓ Automatic Updates

NORMAN®

Limited Warranty

Norman guarantees that the enclosed CD/DVD-ROM and documentation do not have production flaws. If you report a flaw within 30 days of purchase, Norman will replace the defective CD/DVD-ROM and/or documentation at no charge. Proof of purchase must be enclosed with any claim.

This warranty is limited to replacement of the product. Norman is not liable for any other form of loss or damage arising from use of the software or documentation or from errors or deficiencies therein, including but not limited to loss of earnings.

With regard to defects or flaws in the CD/DVD-ROM or documentation, or this licensing agreement, this warranty supersedes any other warranties, expressed or implied, including but not limited to the implied warranties of merchantability and fitness for a particular purpose.

In particular, and without the limitations imposed by the licensing agreement with regard to any special use or purpose, Norman will in no event be liable for loss of profits or other commercial damage including but not limited to incidental or consequential damages.

This warranty expires 30 days after purchase.

The information in this document as well as the functionality of the software is subject to change without notice. The software may be used in accordance with the terms of the license agreement. The purchaser may make one copy of the software for backup purposes. No part of this documentation may be reproduced or transmitted in any form or by any means, electronic or mechanical, including photocopying, recording or information storage and retrieval systems, for any purpose other than the purchaser's personal use, without the explicit written permission of Norman.

The Norman logo is a registered trademark of Norman ASA.

Names of products mentioned in this documentation are either trademarks or registered trademarks of their respective owners. They are mentioned for identification purposes only.

Norman documentation and software are

Copyright © 1990-2011 Norman ASA.

All rights reserved.

Revision date January 2011.

Table of Contents

Endpoint Protection for Linux	4
System requirements.....	4
Installing.....	4
Updating	5
Uninstalling.....	5
Using and configuring	5



Endpoint Protection for Linux

This is an antivirus program for Linux-operated workstations. This user guide refers to stand-alone installations of the program.

System requirements

Operating system	SUSE Linux Enterprise Server 10.2, 64-bit Ubuntu 8.04, 32-bit/64-bit
Computer	Refer to the Linux distribution operating system requirements.

Installing

To install this program you need to run a supported Linux distribution.

Note

The Linux software must be installed as root.

You may have received the installer from your vendor or you can download it from www.norman.com and save it to your computer. Install the program using your computer's command line interface.

This installation requires a valid license key to receive updates.

Installation

For installation with RPM or DEB formats use the different program's package management tool. For SH format installer, follow the instructions below.

- Open your computer's command line interface and locate the installer file.
- Run the installer shell script (SH file format).
- Please read the **Norman Software License Agreement** (EULA) before you type **Y** to confirm that you have read and understood it and continue the installation.
- Install from Norman Endpoint Manager? [Y/n]: Enter n for no.
- Type in your single user license key (5x5 characters) to install and receive updates.
- Type in your user credentials for web administration; select your own username and password that you can easily remember and press **Enter**.
- Please wait while the installation files are unpacked and installed.
- When the installation is complete, you can open the program's administration console by running:

```
/opt/norman/npm/bin/nconsole
```

Alternatively, if you do not have a graphical console, you can access the program using a web browser for remote administration (<http://ipaddress:2868>).

Note

It might take some time before the web interface becomes available.

The first time you open the program after installation is finished, it will soon start to update itself automatically. This may take a few minutes to complete. When your installation is up to date the program is ready for use.

- Optional installation using command line interface
- Open your computer's command line interface and state the parameters applicable for your installation. You need to know the installer name and the license key, and you must set a username and password.

Example:

```
# sh npro-installer.sh -l license_key -u username_for_administration -p  
password_for_administation
```

Updating

The Update Manager is developed especially for Linux. Otherwise it has the same function as the Internet Update for the Windows version of this program. The update manager handles the updating of virus definition files, scanner engine, or program modules of your installation.

If the program does not update itself automatically after installation, you can update manually from the **Install and Update** page by clicking **Update all products**.

When updates are available for download, the update manager automatically downloads, updates and installs necessary components. If you configure the update manager to download updates once a day, for example, your antivirus installation is automatically kept up-to-date.

Uninstalling

For uninstallation of RPM or DEB installations, use the different program's package management tool. For uninstallation of SH installations, run an uninstall script from your command line interface. This script is included in the installer file and located at:

```
# sh /opt/norman/bin/uninstall.sh
```

Using and configuring

Refer to other applicable chapters of this user guide on overall or in-depth use and configuration of the program. The Security Suite comprise of several programs. For Linux installations Antivirus & Antispyware is currently the one program available, including of course the install and update feature.

Essential differences to the Linux installation is presented in this section.

Opening the **nconsole** for the first time after installation takes you to the **Home** page of the program's graphical user interface. When updating is complete, you can start using the program and configure it to your needs. Scan your computer from the **nconsole** graphical user interface, or from your command line interface.

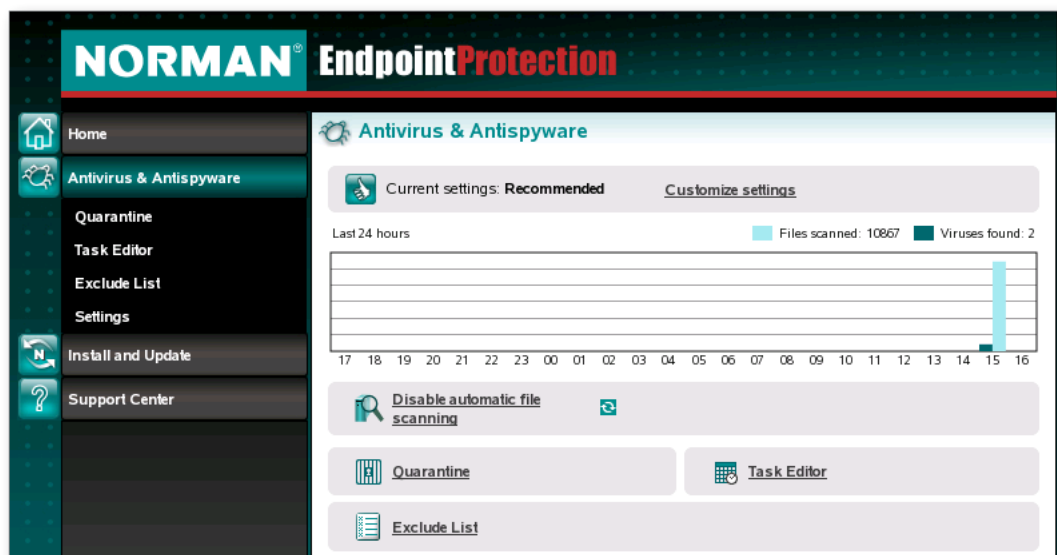
Home

The program opens in the **Home** page from where you can view status and update products.



Antivirus & Antispyware

This is the program's antivirus and antispyware handling feature. Infected files are quarantined, you can schedule scan tasks to run, specify files and folders to be excluded from scanning, and configure the scanner settings.



Two scanners assist you in searching your computer for viruses, the **Automatic scanner** and the **Manual scanner**. The **Command line** scanner is an alternative to the GUI-based Manual scanner.

Automatic scanner

This scanner works in the background and offers automatic protection of your system. It is an essential virus control component and should therefore be enabled at all times. See Norman Security Suite User Guide.

Manual scanner

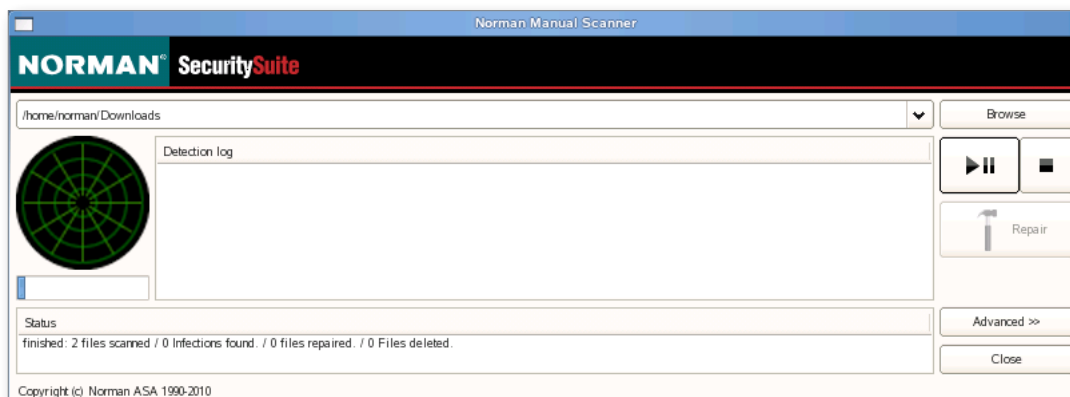
Use manual scanning to scan selected areas of your computer and to create scheduled scans to run at specified intervals. The graphical user interface scanner (`nvcod`) and the Command line scanner (`nvccl`) are both easy to use as you can access them directly from your command line interface. In the following this section describes how to start the manual scanners from your command line interface, as well as using help parameters with a scan started from a command line. For overall use and settings, see Norman Security Suite User Guide.

The default location of the scanners is:

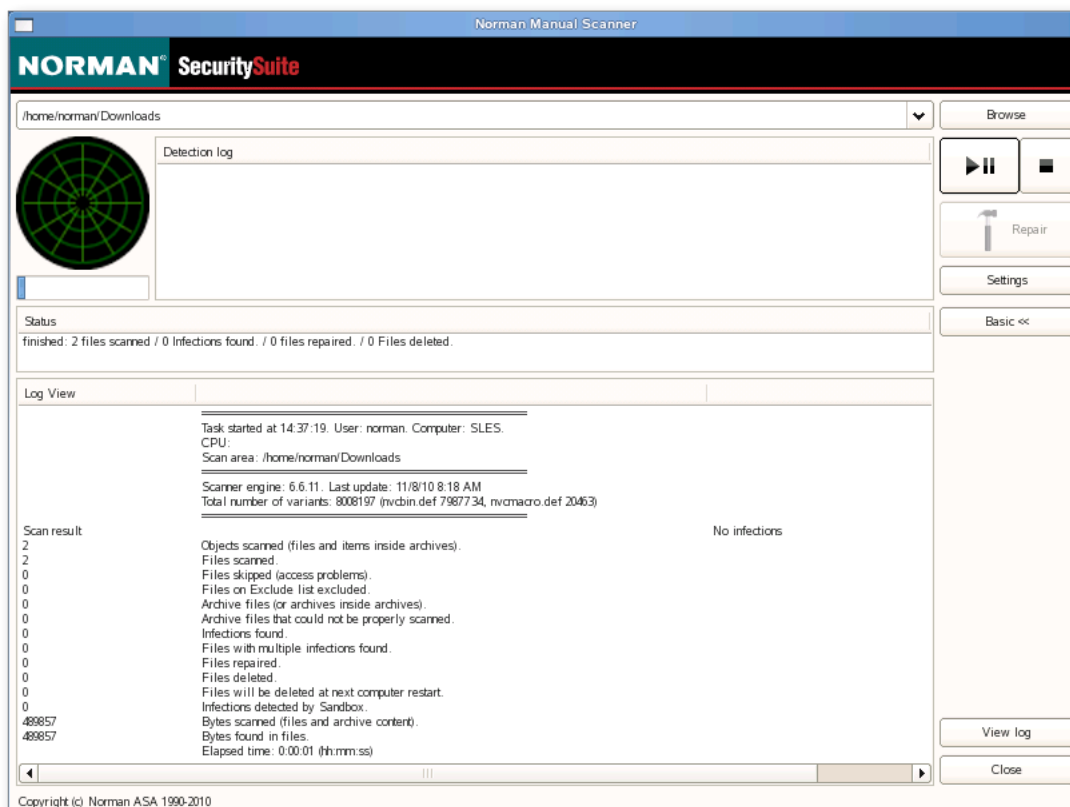
```
/opt/norman/nvc/bin/
```

nvcod

Enter the location and name of the scanner from your command line interface and the manual scanner dialog appears. Browse for areas to scan, select area, and click **▶▶** to start scanning. The specified areas are scanned and a status is displayed when the scan is finished.



To view more scanning details or the log click **Advanced >>**.



nvcc

To start a scan you simply enter the location and name of the scanner from your command line interface, add applicable parameters and/or a path to scan, and press **Enter**:

```
/opt/norman/nvc/bin/nvcc parameter /path(s)/to/scan
```

Example (scan the entire file system):

```
/opt/norman/nvc/bin/nvcc --s+ /
```

Parameters

Help option parameters give you an overview of supported arguments to use with the scanners. You can view the parameters by entering the path to a scanner and then enter `--help` or `--?`.

• Example:

```
/opt/norman/nvc/bin/nvcc --help
```

• Available parameters:

```
--?      Show this help
--net+   Enable scanning of network drives (net- to disable)
--s+     Enable scanning of subdirectories (s- to disable)
--cl+    Enable cleaning of infected files (cl- to disable)
--qtn+   Use quarantine (qtn- to disable)
--sb+    Use sandbox (sb- to disable)
--del-   Do not delete infected files, if they could not be repaired
--c+     Enable scanning inside archives (c- to disable)
--yh     Abort when infection found
--low    Scan with low priority
--sc     Only use single cpu core
--x:     Exclude files from scan (e.g x:"*.zip|*.arc")
--lf:    Specify fully qualified log file name (overrides ld and lg)
--lg:    Specify number of logfile generations
--ld:    Specify directory for log files
--l-     Do not write log file
--q      Quiet mode (No stdout output)
--v      Verbose mode
--temp:  Override environments TEMP/TMP
--bp:    Specify breakpoint file to store scan position
         (e.g. /bp:/tmp/lastscan.log)
```

Install and Update

Update your license

The License Wizard is replaced with an **Update your license** feature. With this Linux environment specific update feature you can check your license and update your installation.

Enter your license key and click **Update** to validate the key and update the program. If the license key is not valid you will be notified.

See also "Updating" on page 5 and Norman Security Suite User Guide **Install and Update**.

NormanOffices

Denmark

Norman Data Defense Systems AS
Blangstedgårdsvej 1,
DK-5220 Odense SØ
Tel: +45 63 11 05 08
Fax: +45 65 90 51 02
Email: info@normandk.com
Web: www.norman.com/dk

Germany

Norman Data Defense Systems GmbH
Zentrale, Gladbecker Str. 3,
D-40472 Düsseldorf
Tel: +49 0211 5 86 99-0
Fax: +49 0211 5 86 99-150
Email: info@norman.de
Web: www.norman.com/de

Spain

Norman Data Defense Systems
Camino Cerro de los Gamos 1, Edif.1,
28224 Pozuelo de Alarcón MADRID
Tel: +34 91 790 11 31
Fax: +34 91 790 11 12
Email: info@normandata.es
Web: www.norman.com/es

France

Norman France
8 Rue de Berri,
F-75008 Paris
Tel: +33 1 42 99 95 09
Fax: +33 1 42 99 95 01
Email: info@norman.fr
Web: www.norman.com/fr

Italy

Norman Data Defense Systems
Centro Cassina Plaza,
Via Roma, 108
20060 Cassina de'Pecchi (MI)
Tel: +39 02 951 58 952
Fax: +39 02 951 38 270
Email: info@normanit.com
Web: www.norman.com/it

Netherlands

Norman SHARK B.V.
Postbus 159,
2130 AD Hoofddorp
Tel: +31 23 789 02 22
Fax: +31 23 561 31 65
Email: support@norman.nl
Web: www.norman.com/nl

Norway

Norman ASA
Headquarter and sales Norway
Hovedkontor og salg Norge
Visit: Strandveien 37, Lysaker
Mail: PO Box 43, N-1324 Lysaker
Tel: +47 67 10 97 00
Fax: +47 67 58 99 40
Email: norman@norman.no
Web: www.norman.com/no

Switzerland

Norman Data Defense Systems AG
Münchensteinerstrasse 43
CH-4052 Basel
Tel: +41 61 317 25 25
Fax: +41 61 317 25 26
Email: norman@norman.ch
Web: www.norman.com/ch

Sweden

Norman Data Defense Systems AB
Södra Grytsgatan 7, 2tr,
Norrköping Science Park
S-602 33 Norrköping
Tel: +46 11 230 330
Fax: +46 11 230 349
Email: sales.se@norman.com
Web: www.norman.com/se

United Kingdom

Norman Data Defense Systems (UK) Ltd
Exchange House,
494 Midsummer Boulevard
Central Milton Keynes,
MK9 2EA
Tel1: +44 08 707 448 044
Tel2: +44 01 908 255 990
Fax: +44 08 701 202 901
Email: info@normanuk.com
Web: www.norman.com/en-uk

United States

Norman Data Defense Systems Inc.
9302 Lee Highway,
Suite 950A,
Fairfax, Virginia 22031
Tel: +1 703 267 6109
Fax: +1 703 934 6368
Email: norman@norman.com
Web: www.norman.com/en-us



Norman ASA is a world leading company within the field of data security, internet protection and analysis tools. Through its SandBox technology Norman offers a unique and proactive protection unlike any other competitor. While focusing on its proactive antivirus technology, the company has formed alliances which enable Norman to offer a complete range of data security services.

Norman was established in 1984 and is headquartered in Norway with continental Europe, UK and US as its main markets.