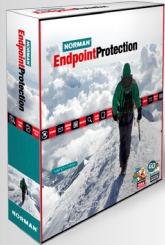


NORMAN® EndpointProtection Advanced



Norman Endpoint Protection is a complete security solution for organizations wanting to secure their users and vital information in a proactive way.

Includes Norman SandBox® technology and DNA Matching for proactive detection of malware.

Detects and removes malware.

Quick and easy to install and use.

Central management.

Automatic updates.

There is little doubt that organizations today must protect their IT infrastructure from malicious threats to their corporate and customer data. With more information moving in and out of networks from a variety of sources, the risk of infection from malicious software (malware) is higher than ever before.

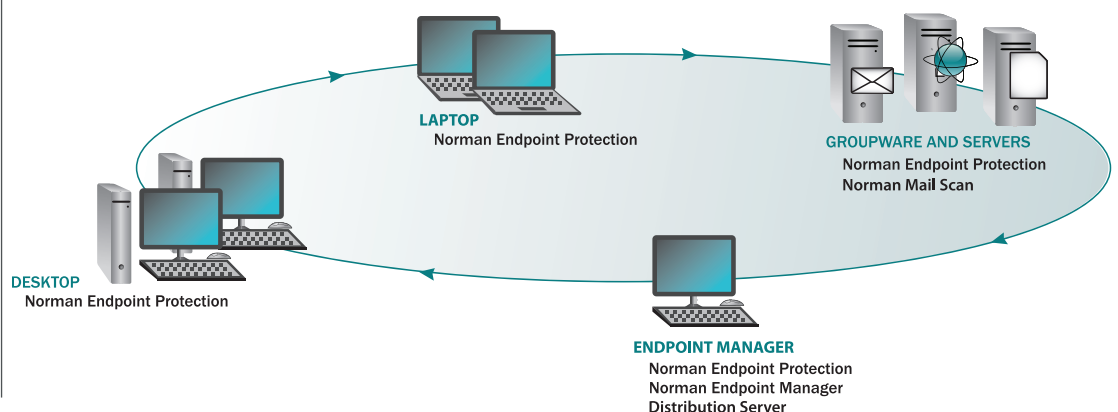
Malware attacks have become increasingly damaging, resulting in reduced productivity, loss of confidential information, strained IT resources, lost customers and lower revenue.

Norman Endpoint Protection is an IT security defense system that meets today's security challenges and protects against tomorrow's criminal attacks on laptops, desktops and servers. To meet the high demand for protection against newborn malware, Norman's well recognized SandBox and DNA Matching technology is included.



Norman Endpoint Protection keeps your laptops, desktops and servers free from malicious programs such as viruses, spyware, worms, trojans, downloaders, keyloggers and even hidden as rootkits.

- Protects, detects and removes malware and spyware on laptops, desktops and servers
- Norman SandBox® and DNA Matching technology for proactive detection
- Wide range of operating systems supported
- Small footprint and low resource usage
- Quick and easy to install and use
- Centralized management through Norman Endpoint Manager
- Automatic updates of all components
- Policy based management
- Autodetection of new networked devices
- MailScan clients for all latest Exchange Servers





NORMAN SANDBOX® is a revolutionary way to detect new and unknown malware in a proactive way.



NORMAN DNA MATCHING, a new proactive technology and method for identifying the viral profile of all kinds of malicious programs.



NORMAN EXPLOIT DETECTION is a technology for detecting malware exploiting vulnerabilities in widely used document types.

SYSTEM REQUIREMENTS

- Win 2000 32-bit SP4 Rollup 1
- Win 2003 32-bit SP1 and R2
 - Win 2003 64-bit
- Win XP 32-bit SP3
 - Win XP 64-bit
- Win Vista 32-bit SP1
 - Win Vista 64-bit
- Win 7 32-bit
 - Win 7 64-bit
- Win 2008 32-bit
 - Win 2008 64-bit
- Exchange Server 2003
- Exchange Server 2007
- Exchange Server 2010

Norman Endpoint Manager

Norman Endpoint Protection includes the powerful, yet easy to use, management tool Norman Endpoint Manager. Norman Endpoint Manager is a web based, graphical application featuring a unique passive discovery technology detecting all IP based devices in the network. With Norman Endpoint Manager, the IT administrator can deploy Norman Endpoint Protection clients to laptops, workstations and servers. With the built-in policy tool, the administrator can keep the desired security state in groups of clients. This tool makes use of policy templates which are fully configurable, and contains special policies for i.e. Microsoft Exchange MailScan clients.

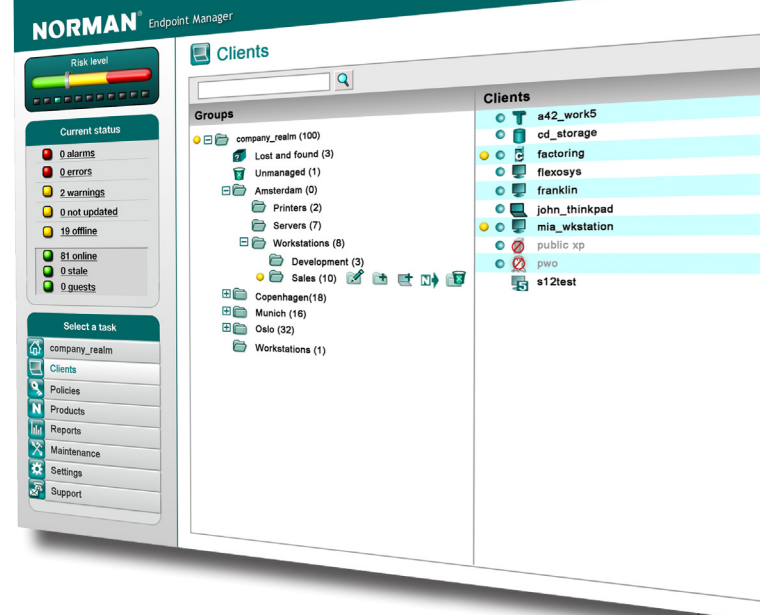


With the dynamic security level indicator and the current status window, the IT administrator gets instant information about the security state of the network. Any malware incidents, outdated clients or system warnings will change the indicator and report detailed incident information through status views, messaging and alarm modules. The system allows for integration with other management tools as well.

Key features

Norman Endpoint Protection is a complete security solution for organizations wanting to secure their users and vital information in a proactive way.

- Endpoint malware protection combines antivirus and antispysware to secure your workstations, laptops and servers.
- MailScan client for Exchange scans all mailboxes for malicious content
- Antivirus recognizes, block, and removes viruses, worms, trojans and other varieties of destructive program code.
- Antispysware capabilities protects against malicious spyware such as keyloggers, hijackers, rootkits and other malicious software that otherwise jeopardizes your privacy, identity or at minimum reduces your computer's performance.
- This anti-malware solution provides Norman SandBox® and DNA Matching technology for all endpoints. These advanced proactive technologies protect against new and unknown malware, keeping your endpoints resistant to the daily influx of newborn malware.
- Support for Network Admission Control systems that grants access to compliant and trusted client machines only, for added control within your network.
- Rootkit protection provides extra protection, including rootkit removal functionality.



Norman ASA is a world leading company within the field of data security, internet protection and analysis tools. Through its SandBox technology Norman offers a unique and proactive protection unlike any other competitor. While focusing on its proactive antivirus technology, the company has formed alliances which enable Norman to offer a complete range of data security services. Norman was established in 1984 and is headquartered in Norway with continental Europe, UK and US as its main markets.

www.norman.com

Norman SandBox® US Patent Number 7,356,736

NORMAN®